



PRECISION

DUAL LATEROLOG - GR

DENSITY - NEUTRON

Compact

1:500 TVD

COMPANY				ESSO AUSTRALIA PTY.LTD			
WELL				WKF W27A			
FIELD				KINGFISH GDA94			
PROVINCE/COUNTRY				BASS STRAIT, VICTORIA			
COUNTRY/STATE				AUSTRALIA			
LOCATION				S 38 35 34.851, E 148 6 20.022			
				N 5727806.021 m, E 596279.875 m			
				FIELD PRINT			
LSD	SEC	TWP	RGE	Other Services			
				COMPENSATED SONIC			
API Number							
Permit Number							
Permanent Datum MSL				, Elevation 0.0		metres	
Log Measured From DF @ 33.43m				above Permanent Datum			
Drilling Measured From DF						Elevations: KB 33.43 metres DF 33.43 metres GL -76.13 metres	
Date	26-JUL-2006						
Run Number	ONE						
Depth Driller	2366.00			metres			
Depth Logger	2366.00			metres			
First Reading	2362.00			metres			
Last Reading	803.60			metres			
Casing Driller	803.60			metres			
Casing Logger	803.60			metres			
Bit Size	8.50			inches			
Hole Fluid Type	KCL/PHPA						
Density / Viscosity	1.16 g/cc		26.00 CP				
PH / Fluid Loss	9.50		2.80 ml/30Min				
Sample Source	FLOWLINE						
Rm @ Measured Temp	0.105 @ 25.0			ohm-m			
Rmf @ Measured Temp	0.08 @ 25.0			ohm-m			
Rmc @ Measured Temp	0.081 @ 25.0			ohm-m			
Source Rmf / Rmc	MEAS		MEAS				
Rm @ BHT	0.046 @ 87.1			ohm-m			
Time Since Circulation	28 HOURS						
Max Recorded Temp	93.80		deg C				
Equipment Name	CML						
Equipment / Base	1		SALE				
Recorded By	R L TENCH, B J R MOSS						
Witnessed By	T LOBO						
LAST CIRC.	12:25 24/07			Last Line			

BOREHOLE RECORD				
Bit Size inches		Depth From metres		Depth To metres
8.500		895.00		3095.00
CASING RECORD				
Type	Size inches	Depth From metres	Shoe Depth metres	Weight pounds/ft
K-55	10.750	0.00	895.00	40.50

REMARKS
RIG: NABORS 453
5" SHUTTLE/MEMORY COMPACT OPERATION. CREW: R TENCH , B MOSS , J.BLESSING, M KOLCZE.
FIELD FINAL LOGS TO BE CORRELATED TO ANADRILL GAMMA LOG.
MAX. TEMPERATURE: 93.8 DEG C AT 3041m MD MAX. INCLINATION: 46.10 DEG AT 3095 m MD MAX. DOGLEG SEVERITY: 5.03 DEG/30m AT 993.08 m MD DEPLOYMENT ANGLE: 46.10 DEG
HVOL: 3285 FT^3 AVOL: 1382 FT^3
LOGGING SPEED 6M/MIN FROM TD TO 2791.52 M MD LOGGING SPEED 12 M/MIN FROM 2791.52 TO 1297.42 M MD LOGGING SPEED 6 M/MIN FROM 1297.42 TO 1125.7 M MD LOGGING SPEED 12 M/MIN FROM 1125.7 TO 866.87 M MD
BRIDGED OFF AT 2364M MD, REQUIRED 3BBLs FLOW TO PASS BRIDGE.

All interpretations are opinions based on inferences from electrical or other measurements and we cannot, and do not, guarantee the accuracy or correctness of any interpretations, and we shall not, except in the case of gross or wilful negligence on our part, be liable or responsible for any loss, costs, damages or expenses incurred or sustained by anyone resulting from any interpretation made by any of our officers, agents or employees. These interpretations are also subject to our general terms and conditions in our price schedule.

↓

MAIN LOG 1:500

↓

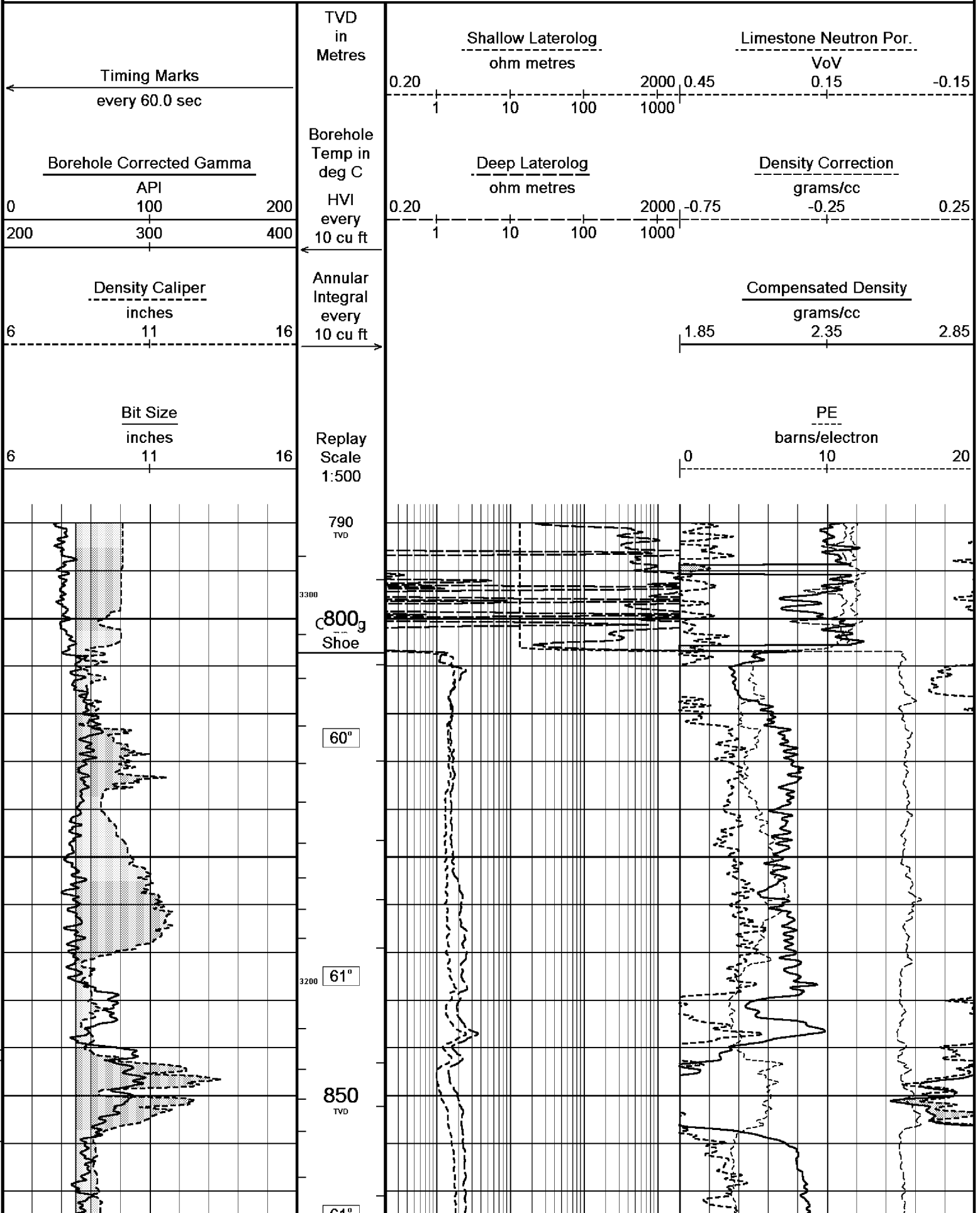
Depth Based Data - Maximum Sampling Increment 10.0cm

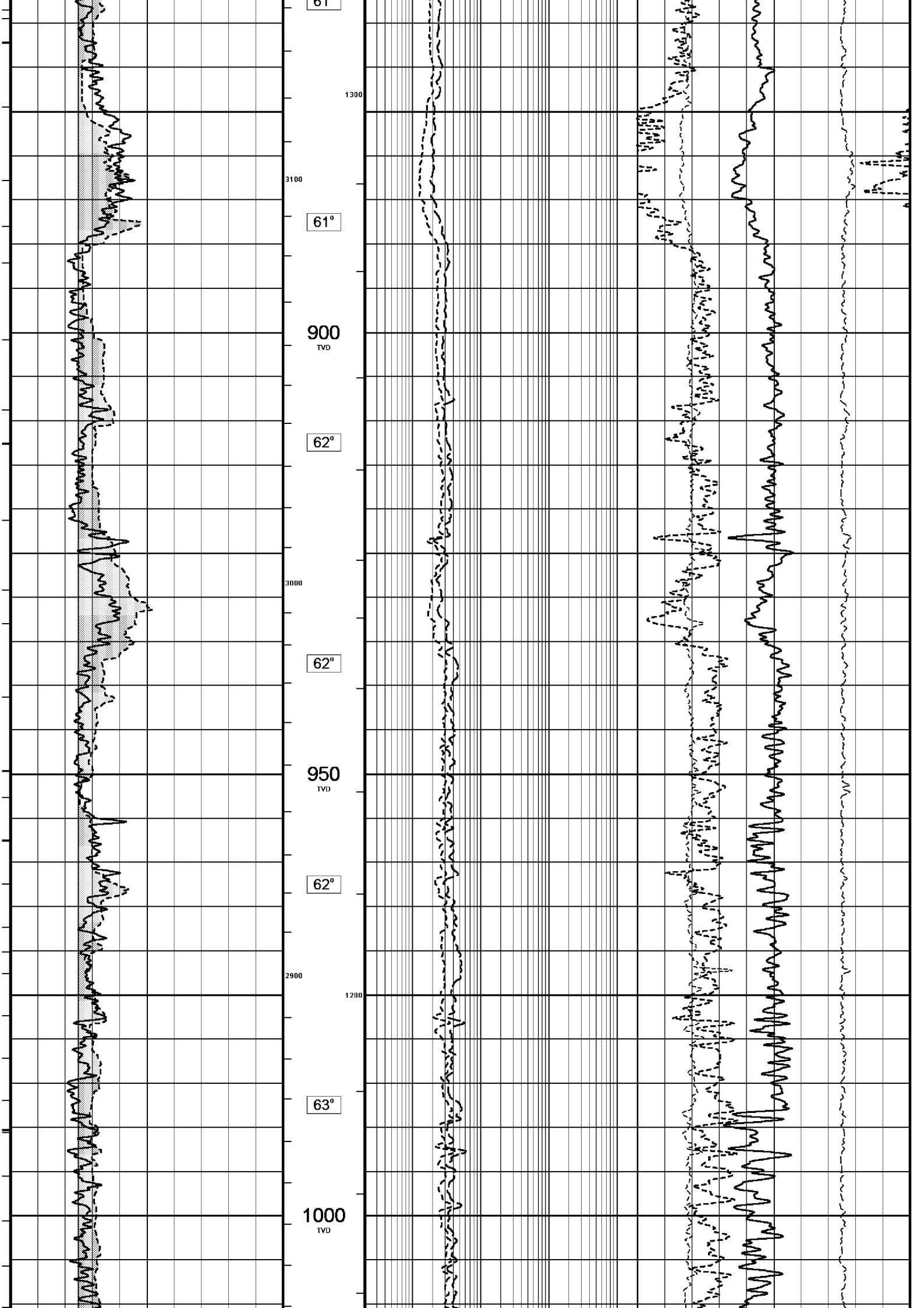
Plotted on 26-JUL-2006 13:48

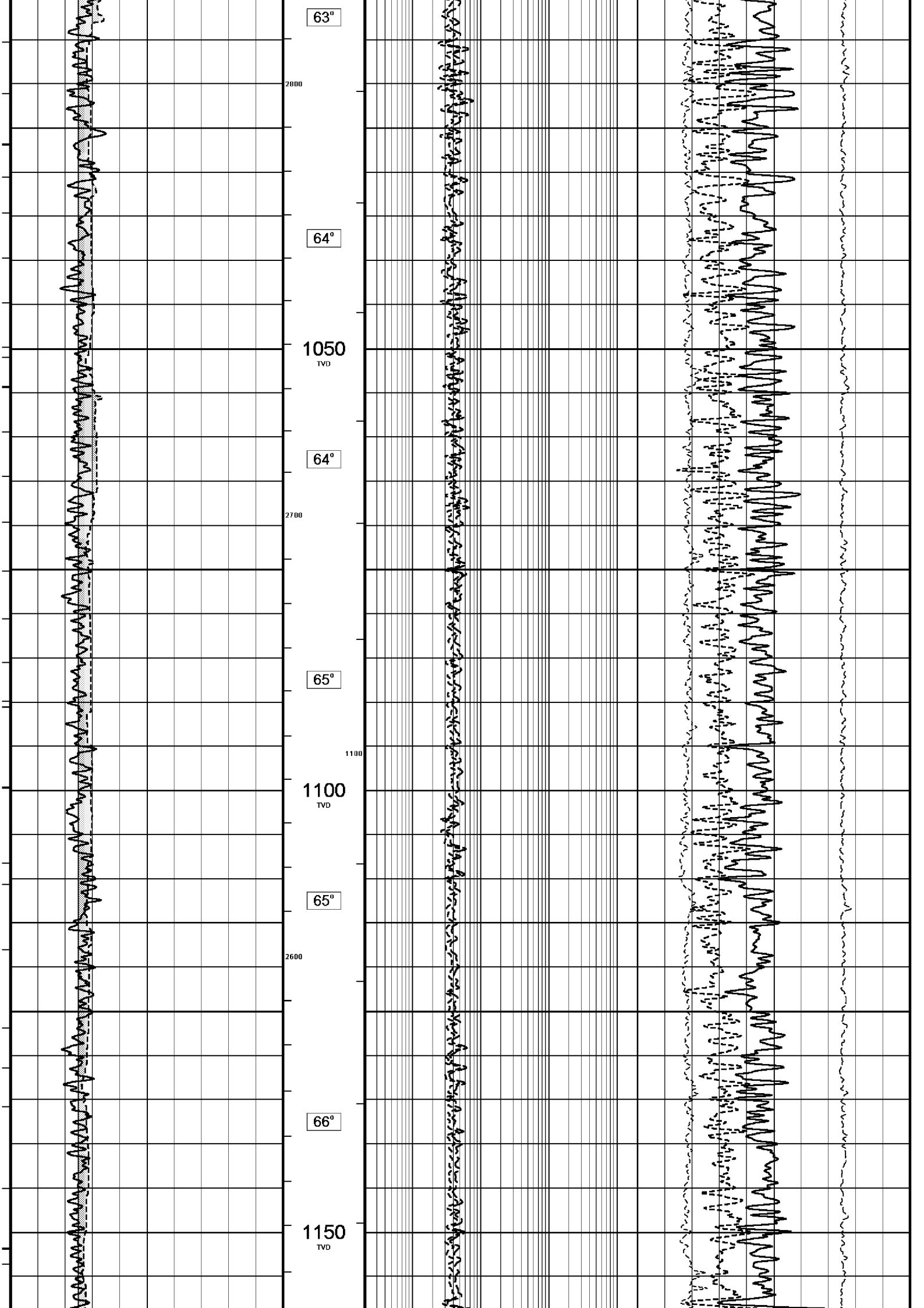
Filename: C:\logs\WKF_W27A\FIELD_DATA\WKF_W27A_MAIN_LOG_FULL.dta

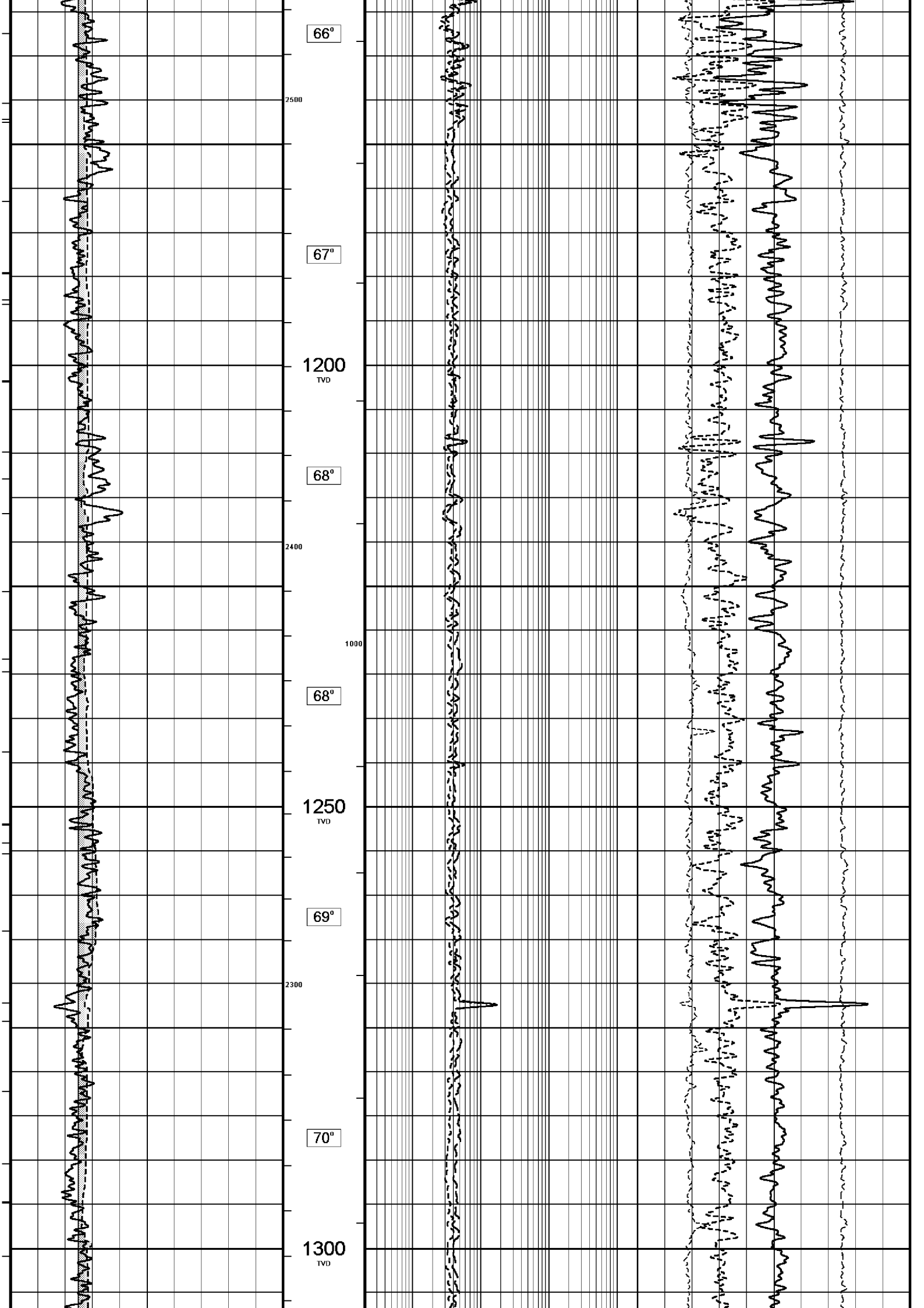
Recorded on 26-JUL-2006 03:12

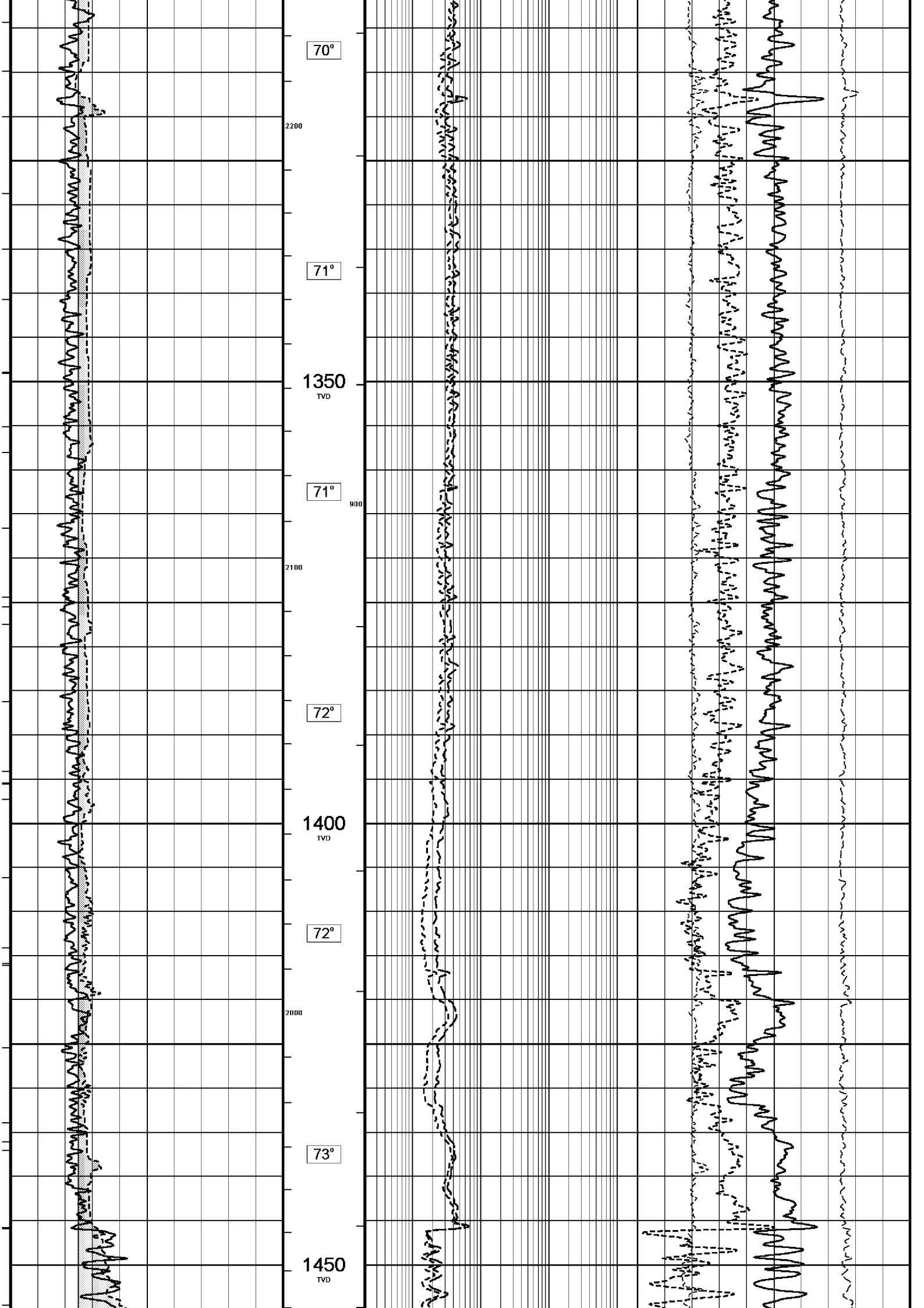
System Configuration Dates: Logged : Plotted 17-JUN-2004:

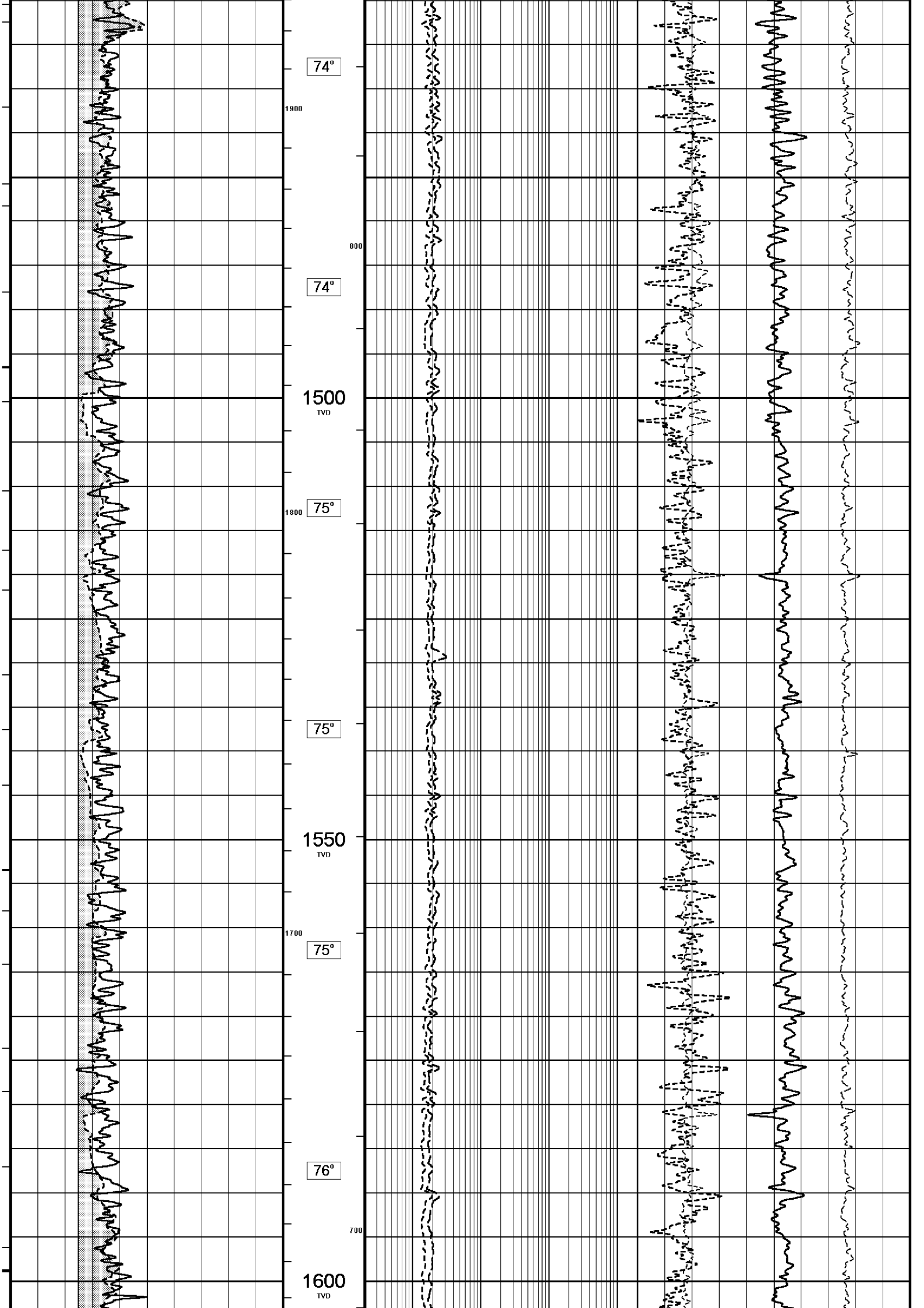


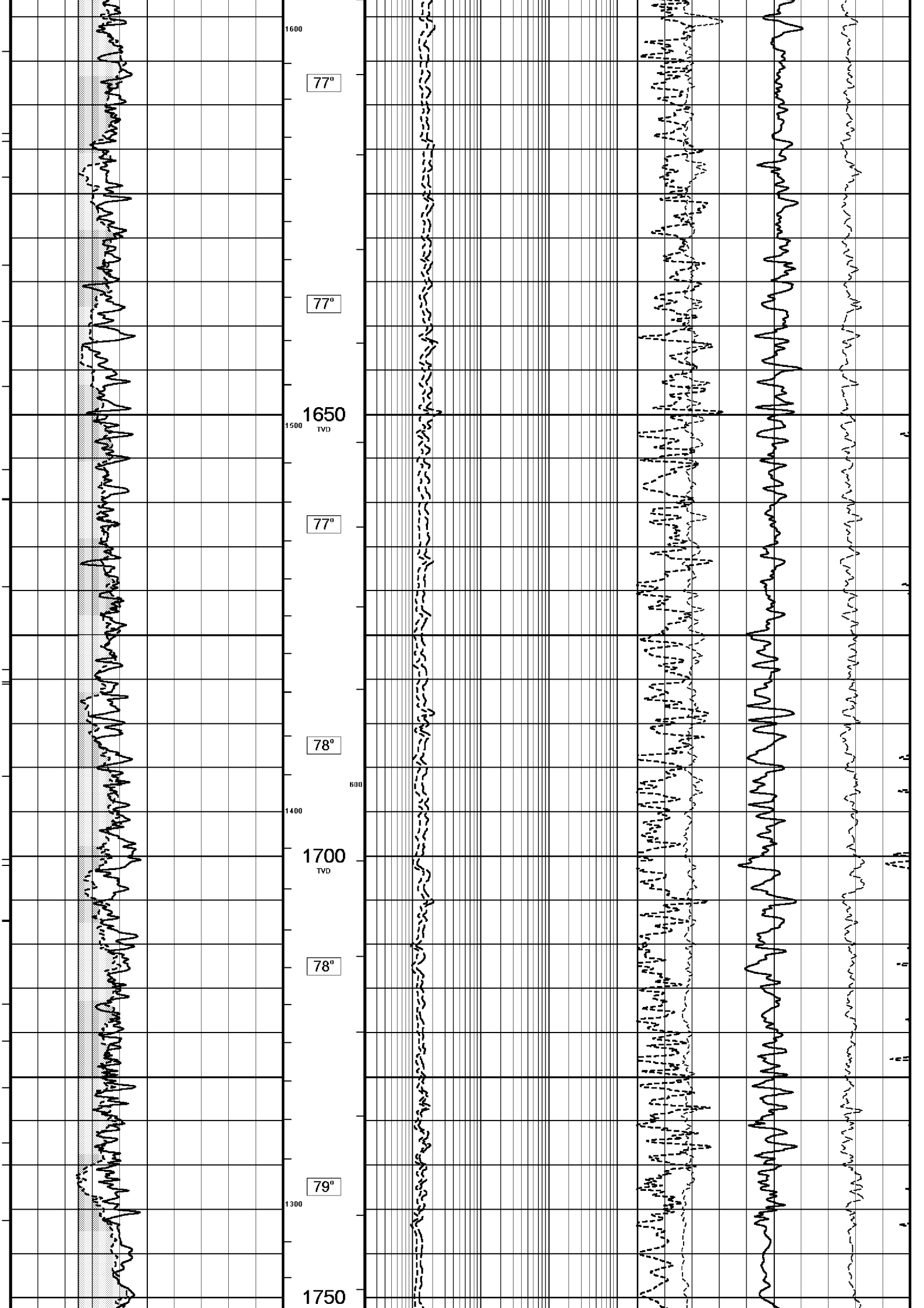


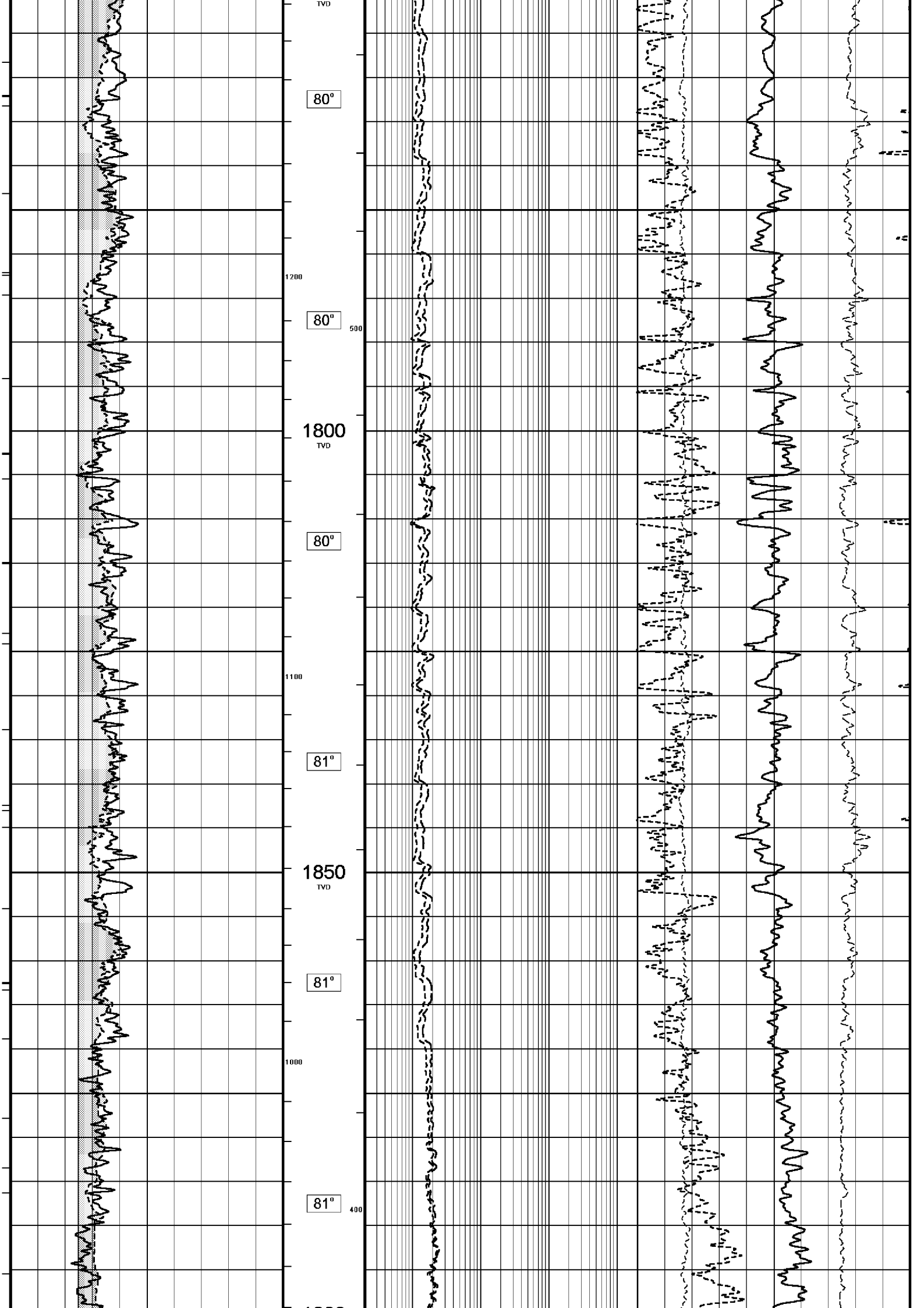


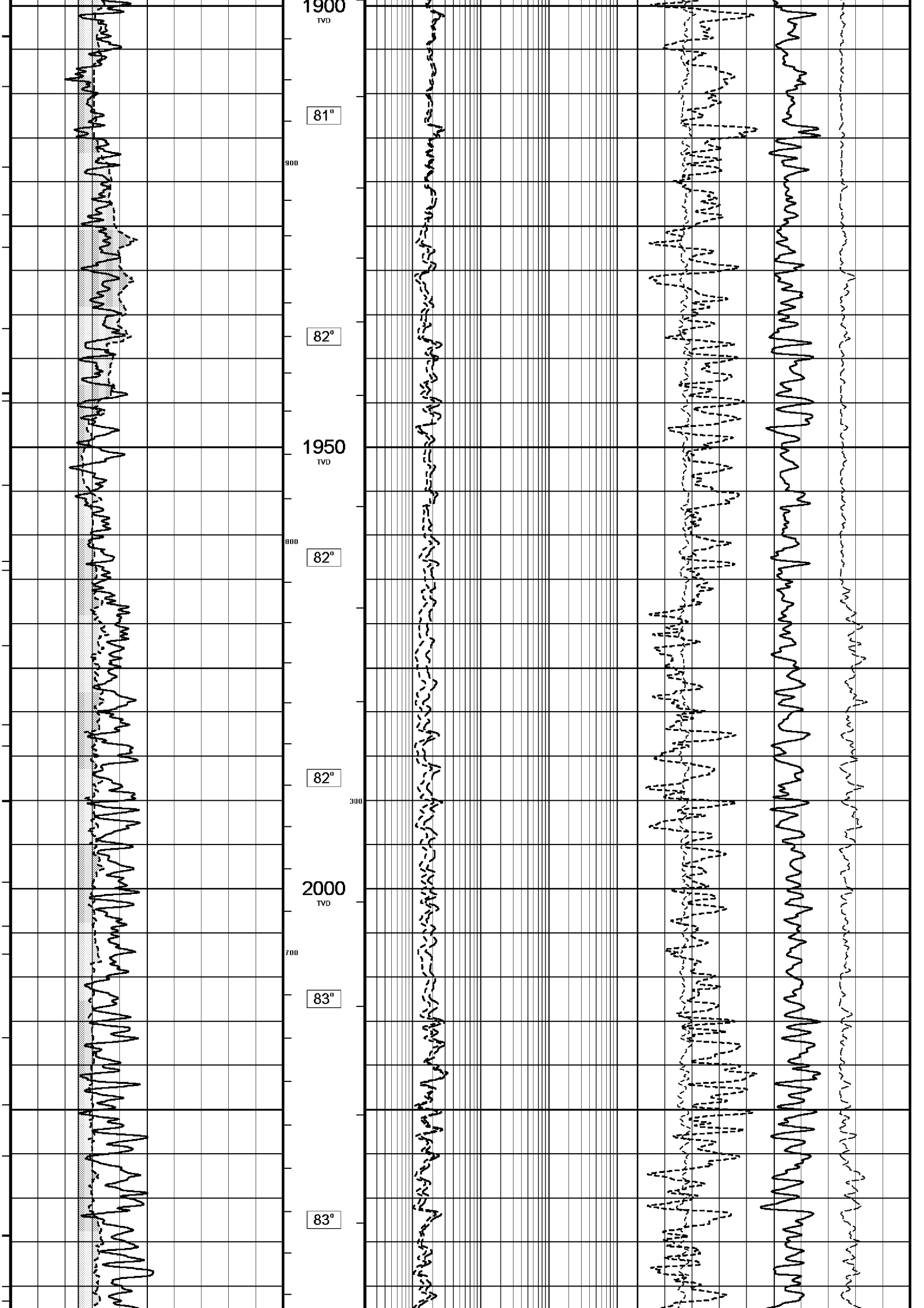


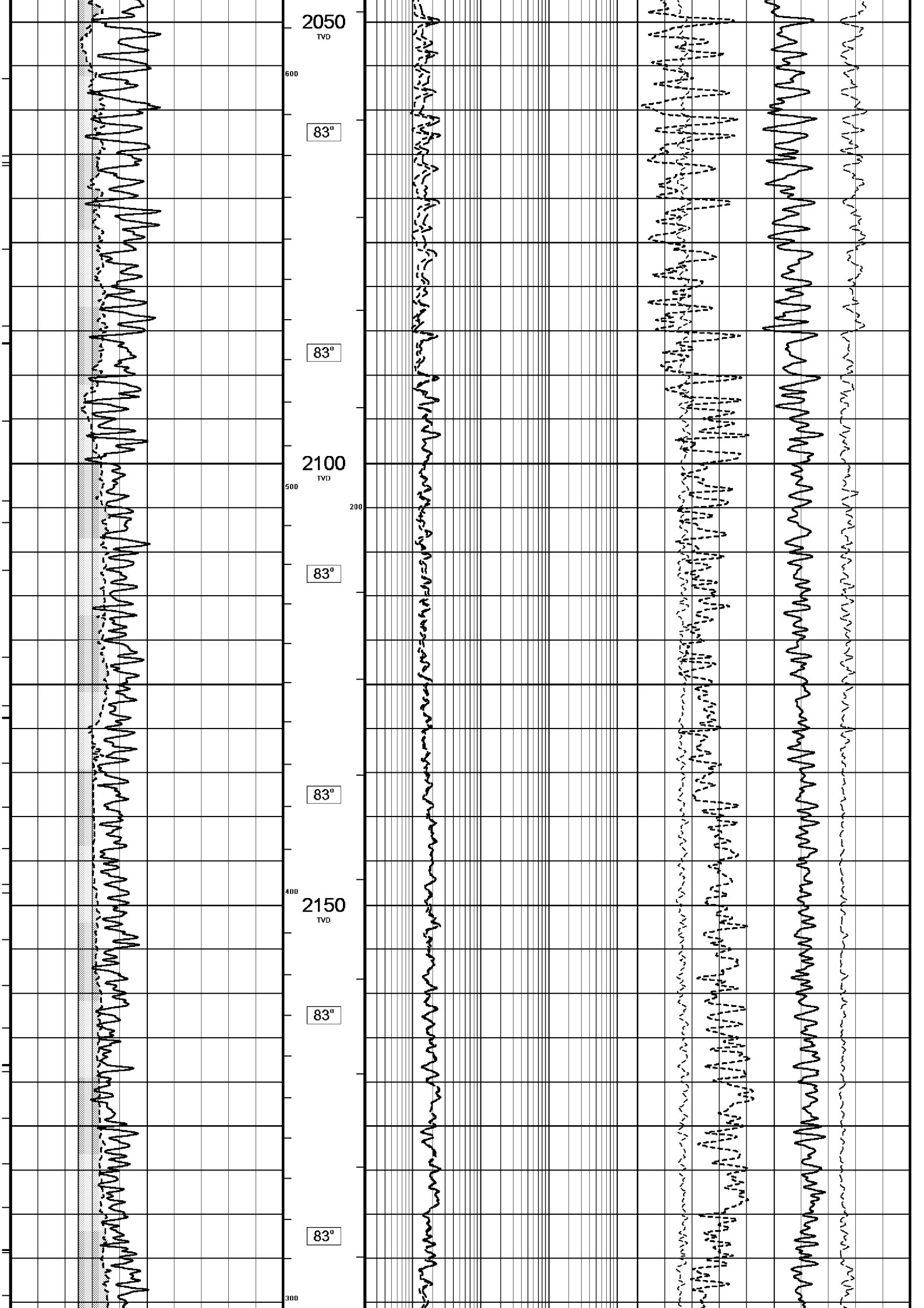


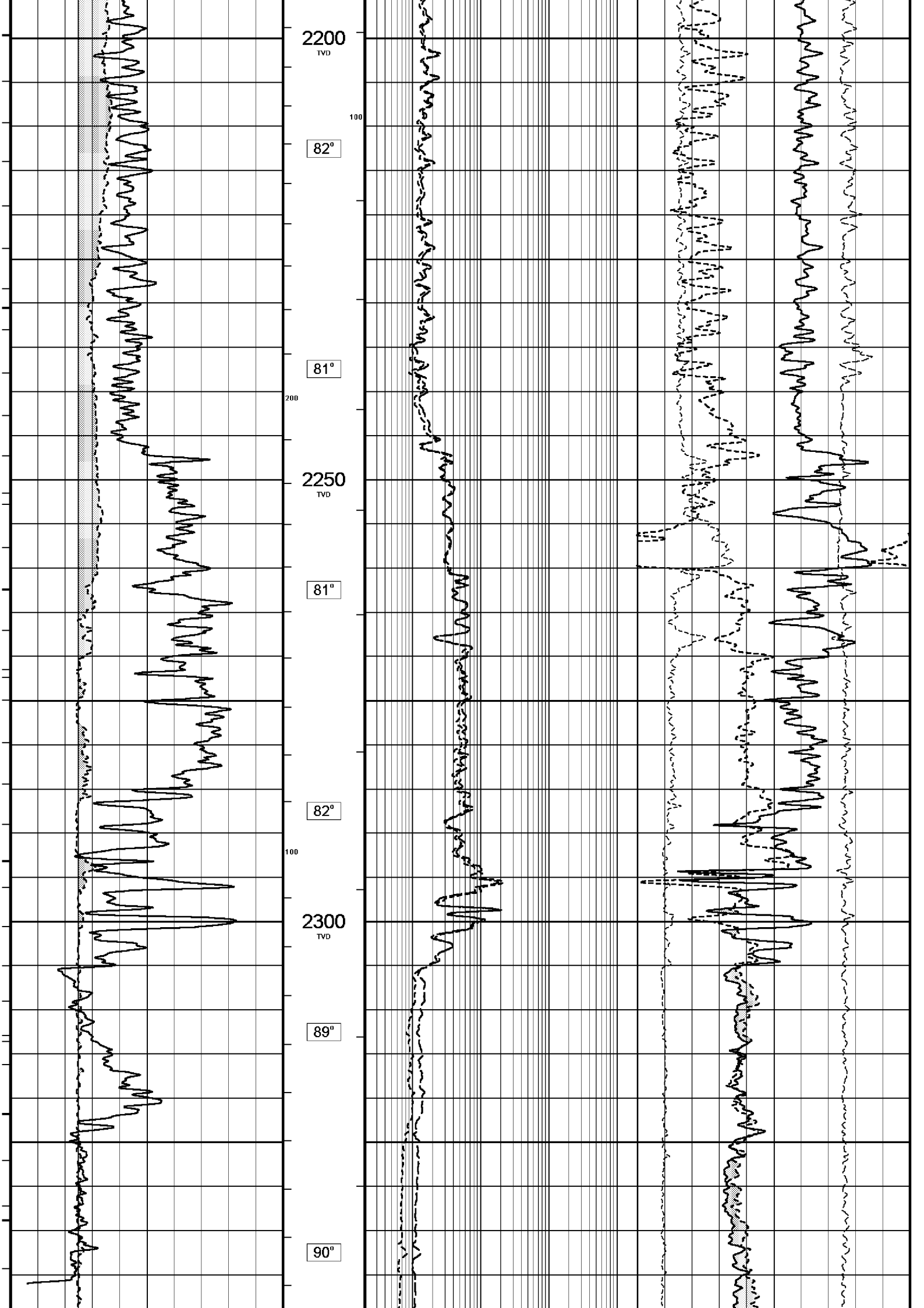


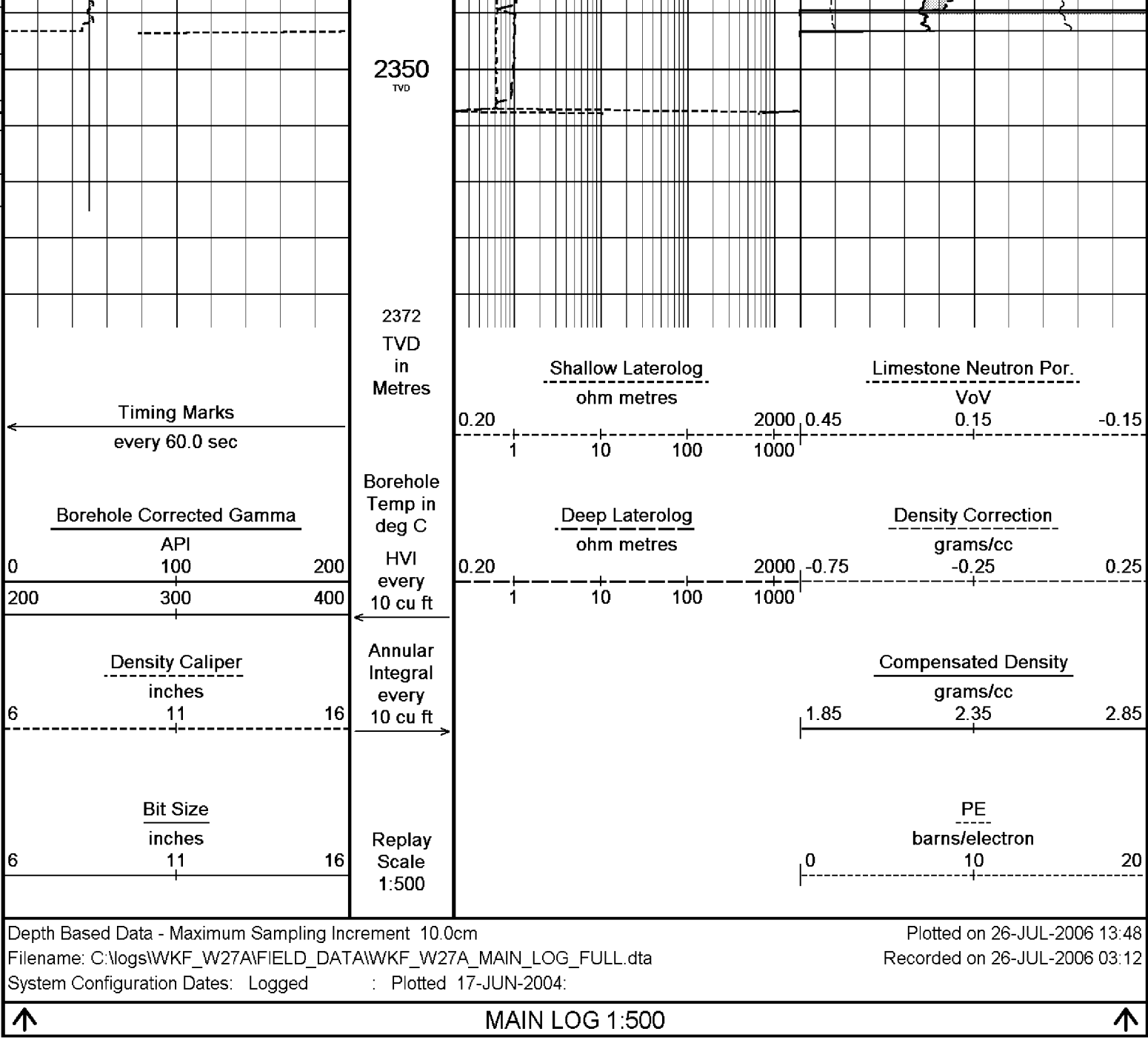












BEFORE SURVEY CALIBRATION		
C:\logs\WKF_W27A\FIELD_DATA\WKF_W27A_MAIN_LOG.dta		
General Constants All 000		
General Parameters		
Mud Resistivity	0.105	ohm-metres
Mud Resistivity Temperature	25.000	degrees C
Water Level	0.000	metres
Density/Neutron Processing	Wet Hole	
Hole/Annular Volume and Differential Caliper Parameters		
HVOL Caliper 1	Density Caliper	
HVOL Caliper 2	Density Caliper	
Annular Volume Diameter	7.000	inches
Caliper for Differential Caliper	None	
Rwa Parameters		
Porosity used	Base Density Porosity	
Resistivity used	Deep Induction	
RWA Constant A	0.610	
RWA Constant M	2.150	
High Resolution Temperature Calibration MCG 142		
Measured	Calibrated (Deg C)	Field Calibration on 21-JUN-2006,15:43

Lower	0.00	0.00
Upper	100.00	100.00
High Resolution Temperature Constants MCG 142		
Pre-filter Length	11	
Gamma Calibration MCG 142		
	Measured	Calibrated (API)
Background	22	15
Calibrator (Gross)	1363	924
Calibrator (Net)	1341	909
Gamma Constants MCG 142		
Gamma Calibrator Number	60	
Mud Density	1.16	gm/cc
Caliper Source for Processing	Density Caliper	
Tool Position	Eccentred	
Concentration of KCl	0.00	kppm
Neutron Calibration MDN 085		
Base Calibration		Base Calibration on 19-JUL-2006 16:31 Field Check on 24-JUL-2006 02:09
	Measured	Calibrated (cps)
	Near Far	Near Far
	3105 96	3714 110
Ratio	32.405	33.764
Field Calibrator at Base		Calibrated (cps)
		1634 2400
Ratio		0.681
Field Check		Calibrated (cps)
		1575 2369
Ratio		0.665
Neutron Constants MDN 085		
Neutron Source Id	NSN-E-739	
Neutron Jig Number	NEC-E-052	
Epithermal Neutron	No	
Caliper Source for Processing	Bit Size	
Stand-off	0.00	inches
Mud Density	1.16	gm/cc
Limestone Sigma	7.10	cu
Sandstone Sigma	4.26	cu
Dolomite Sigma	4.70	cu
Formation Pressure Source	None	
Formation Pressure	N/A	kpsi
Temperature Source	MCG External Temperature	
Temperature	N/A	degrees C
Mud Salinity	64.90	kppm
Formation Fluid Salinity Source	None	
Formation Fluid Salinity	N/A	kppm
Barite Mud Correction	Not Applied	
Caliper Calibration MPD 083		
Base Calibration		Base Calibration on 19-JUL-2006 12:33 Field Calibration on 24-JUL-2006,02:04
Reading No	Measured	Calibrator Size (in)
1	15377	4.01
2	22794	5.99
3	31114	7.98
4	39638	9.94
5	48896	12.01
6	N/A	N/A
Field Calibration		
	Measured Caliper (in)	Actual Caliper (in)
	7.98	7.98
Photo Density Calibration MPD 083		
Density Calibration		Base Calibration on 19-JUL-2006 11:18 Field Check on 24-JUL-2006 01:57
Base Calibration	Measured	Calibrated (sdu)

		Near	Far	Near	Far
Reference 1	55597	18484	53111	19310	
Reference 2	26161	2451	24951	2530	
Field Check at Base					
	937.1	1075.9			
Field Check					
	934.2	1074.1			
PE Calibration					
Base Calibration		Measured		Calibrated	
	WS	WH	Ratio	Ratio	
Background	176	801			
Reference 1	17753	55402	0.322	0.320	
Reference 2	6997	26014	0.270	0.273	
Field Check at Base					
	176.5	800.7			
Field Check					
	176.6	801.2			

Density Constants MPD 083

Density Source Id	NSDL 242	
Nylon Calibrator Number	DNC-D-536	
Aluminium/Fe Calibrator Number	DAC-D-536	
Density Shoe Profile	4 inch	
Caliper Source for Processing	Density Caliper	
PE Correction to Density	Not Applied	
Mud Density	1.16	gm/cc
Mud Density Z/A Correction	1.11	
Mud Filtrate Density	1.00	gm/cc
Dry Hole Mud Filtrate Density	1.00	gm/cc
DNCT	0.00	gm/cc
CRCT	0.00	gm/cc
Matrix Density (gm/cc)	Depth (m)	
2.71	0.00	
0.00	0.00	
0.00	0.00	
0.00	0.00	
0.00	0.00	
0.00	0.00	
0.00	0.00	
0.00	0.00	

Laterolog Calibration MLE 031

Base Calibration on 17-JUL-2006,15:10
Field Check on 24-JUL-2006,02:22

Base Calibration				
	Measured	Calibrated (ohm-m)		
Channel	Resistor 1	Resistor 2	Resistor 1	Resistor 2
Shallow	9.8	976.4	13.2	1321.0
Deep	9.8	976.6	7.5	755.0
Groningen	9.8	976.7	8.5	854.0
Channel	Base Check (ohm-m)	Field Check (ohm-m)		
Shallow	48.6	48.6		
Deep	27.8	27.8		
Groningen	251.6	251.6		

Laterolog Constants MLE 031

Squasher Start	40000	ohm-m
Shallow Laterolog K Factor	1.3210	
Deep Laterolog K Factor	0.7550	
Groningen Laterolog K Factor	0.8540	
Interference Rejection	50 Hz	
SP Connection	SP Bridle Electrode	
Groningen Connection	None	

DOWNHOLE EQUIPMENT

C:\logs\WKF_W27A\FIELD_DATA\WKF_W27A_MAIN_LOG.dta

Compact Swivel Head Adaptor F
SHA 71 Length: 0.83 m Weight: 26.5 lb

Compact Knuckle Joint
SKJ 100 Length: 0.66 m Weight: 24.3 lb

Compact Battery Sub.
MBS 99 Length: 4.41 m Weight: 44.1 lb

Compact Inline Standoff B
MIS 31 Length: 0.65 m Weight: 15.4 lb

Compact Stiff Bridle Electrode Sub.
MBE 18 Length: 3.76 m Weight: 94.8 lb

Compact Inline Standoff B
MIS 141 Length: 0.65 m Weight: 15.4 lb

Compact Stiff Bridle Electrode Sub.
MBE 19 Length: 3.76 m Weight: 94.8 lb

Compact Inline Standoff B
MIS 129 Length: 0.65 m Weight: 15.4 lb

MBE 21 Compact Stiff Bridle Electrode
MLK 111 Length: 3.76 m Weight: 94.8 lb

Compact Inline Standoff B
MIS 135 Length: 0.65 m Weight: 15.4 lb

Compact Gamma
MCG 142 Length: 2.65 m Weight: 63.9 lb

Compact Memory Sub A.C
MMS 38 Length: 0.95 m Weight: 30.9 lb

Compact Inline Bowspring A
MIS 95 Length: 1.74 m Weight: 33.1 lb



32.22 m GGCE - Borehole Corrected Gamma
31.33 m CGXT - MCG External Temperature

MIS 55 Length: 1.74 m Weight: 55.1 lb

Compact Swivel Head Adaptor F
SHA 64 Length: 0.83 m Weight: 26.5 lb

Compact Knuckle Joint
SKJ 101 Length: 0.66 m Weight: 24.3 lb

Compact Neutron
MDN 85 Length: 1.53 m Weight: 50.7 lb

Compact Density/Caliper
MPD 83 Length: 2.92 m Weight: 90.4 lb

Compact Knuckle Joint
SKJ 46 Length: 0.66 m Weight: 24.3 lb

Compact Swivel Head Adaptor F
SHA 73 Length: 0.83 m Weight: 26.5 lb

Compact Inline Bowspring A
MIS 24 Length: 1.74 m Weight: 33.1 lb

Compact Inline Standoff B
MIS 132 Length: 0.65 m Weight: 15.4 lb

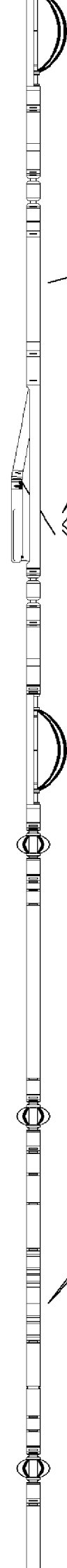
Compact Upper Guard Sub.
MUG 30 Length: 2.74 m Weight: 68.3 lb

Compact Inline Standoff B
MIS 139 Length: 0.65 m Weight: 15.4 lb

Compact Laterolog Electrode Sub.
MLE 31 Length: 3.76 m Weight: 92.6 lb

Compact Inline Standoff B
MIS 138 Length: 0.65 m Weight: 15.4 lb

Compact Lower Guard Sub.
MLG 7 Length: 2.44 m Weight: 55.1 lb



26.17 m NPRL - Limestone Neutron Por.

23.48 m AVOL - Annular Volume
23.48 m HVOL - Hole Volume
23.48 m CLDC - Density Caliper
23.27 m DEN - Compensated Density

23.27 m DCOR - Density Correction
23.25 m PDPE - PE

13.35 m DDLL - Deep Laterolog
13.35 m DSLL - Shallow Laterolog

Compact Inline Standoff B
MIS 73 Length: 0.65 m

Weight: 15.4 lb

Compact Sonic
MSS 66 Length: 3.82 m

Weight: 72.8 lb

Compact Inline Standoff B
MIS 127 Length: 0.65 m

Weight: 15.4 lb

Compact Induction
MAI 39 Length: 3.29 m

Weight: 48.5 lb

Pressure Bung + Hole Finder
HFS 4 Length: 0.40 m

Weight: 6.6 lb

Total Length: 54.01 m

Weight: 1265.5 lb



4.60 m TR22 - 5' Transit Time
4.60 m TR11 - 4' Transit Time
4.60 m TR21 - 3' Transit Time
4.60 m TR12 - 6' Transit Time

4.60 m DT35 - 3-5' Compensated Sonic

Tool Zero (0.44m from bottom)

All measurements relative to tool zero.

COMPANY	ESSO AUSTRALIA PTY.LTD
WELL	WKF W27A
FIELD	KINGFISH GDA94
PROVINCE/COUNTY	BASS STRAIT, VICTORIA
COUNTRY/STATE	AUSTRALIA

Elevation Kelly Bushing	metres	First Reading	2362.00	metres
Elevation Drill Floor	33.43 metres	Depth Driller	2366.00	metres
Elevation Ground Level	-76.13 metres	Depth Logger	2366.00	metres



DUAL LATEROLOG - GR
DENSITY - NEUTRON
1:500 TVD